

SIGMEN

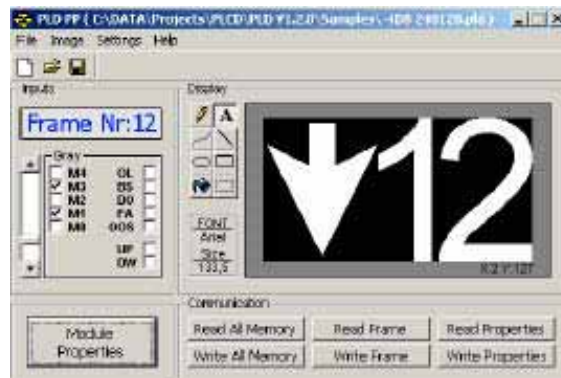
***FLOOR
INDICATORS
CATALOGUE
2006***

INDEX

1. LCD Indicators.....	3
2. Dot Matrix Indicators.....	7
3. Accessories.....	15

LKG240128T Blue White Programmable LCD Panel**Functions**

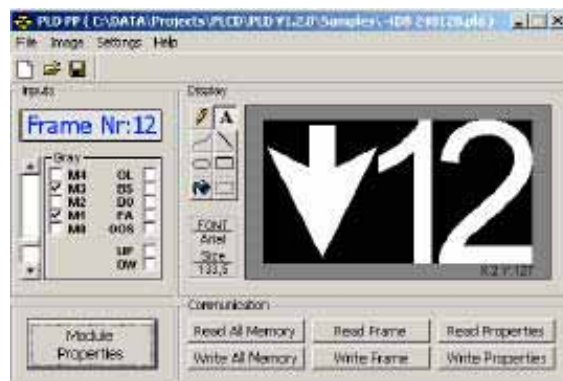
- General purpose displaying panel for floor and cabin fixtures,
- 240 x 128 pixel blue white LCD panel,
- 114 x 64 mm glass, wide viewing angle,
- Long life white LED backlighting,
- Binary, grey, 7 segment inputs are acceptable,
- Positive or negative common selectable,
- Wide input voltage range 12V - 35V DC,
- Lithium cell backed up date and time (optional),
- Direction arrows, overload, out of service, busy, fan and door stuck figures can be displayed,
- 2MB FLASH memory, PC programmable,
- Date and time can be displayed,
- Can be mounted in horizontal and vertical directions.

**With PC Software**

- Download bitmap pictures,
- Use true type fonts,
- Draw your own company logos,
- Create new bitmapped fonts.

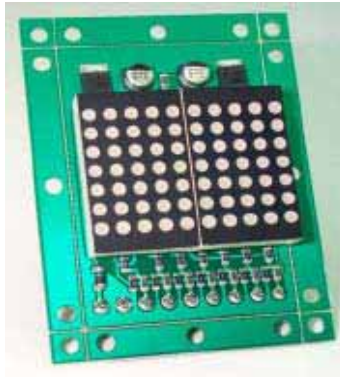
LKG12864C Blue White LCD Panel**Functions**

- General purpose displaying panel for elevator fixtures,
- 128 x 64 pixel blue white LCD panel,
- 70 x 40 mm glass, wide viewing angle,
- Long life white LED backlighting,
- Binary, grey and 7 segment inputs are acceptable,
- Positive or negative common selectable,
- Wide input voltage range 12V - 30V DC,
- Direction arrows, overload, out of service, busy, fan and door stuck figures can be displayed,
- 512Kb EEPROM memory, PC programmable,
- Can be mounted in vertical or horizontal directions,
- 7 Segment input decoding ability makes PLD12864C is a direct replacement of old elevator displays.

**With PC Software**

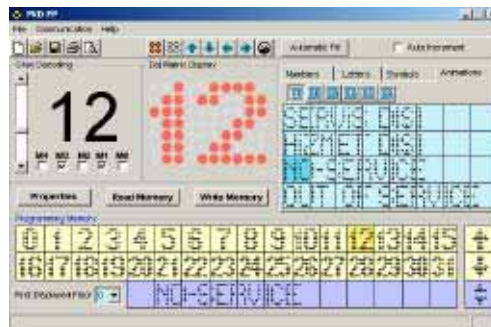
- Download bitmap pictures,
- Use true type fonts,
- Draw your own company logos,
- Create new bitmapped fonts.

DMD230C Dot Matrix Display



Functions

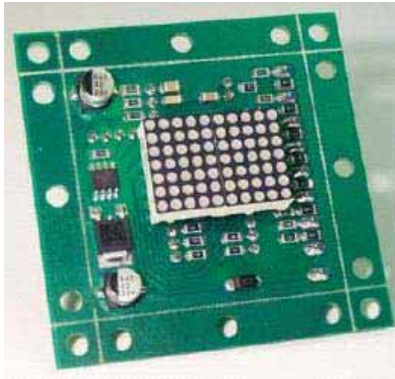
- 30 mm Φ 3 10 x 7 dot matrix LED display,
- 100 Hz scanning frequency, 1/5 duty factor,
- Several mounting options,
- 12V - 30V DC supply, 85 mA current consumption,
- Negative common, grey, binary coded input decoding,
- Direction arrows input,
- Unlimited font selection, bitmapped fonts,
- EEPROM type memory, no need to preorder,
- A low cost alternative to display floor figures,
- Programmable structure gives flexible displaying options.



User Adjustable Properties

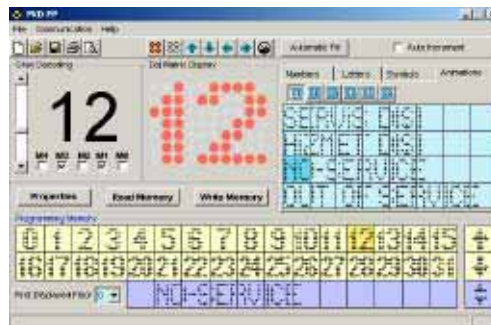
- Luminance (200 steps),
- Scrolling speed,
- Horizontal / Vertical displaying,
- Fixed or moving direction arrows,
- Moving arrows sliding delay,
- Out of Service input selection,
- Inputs accepted delay time.

DMD218C Dot Matrix Display



Functions

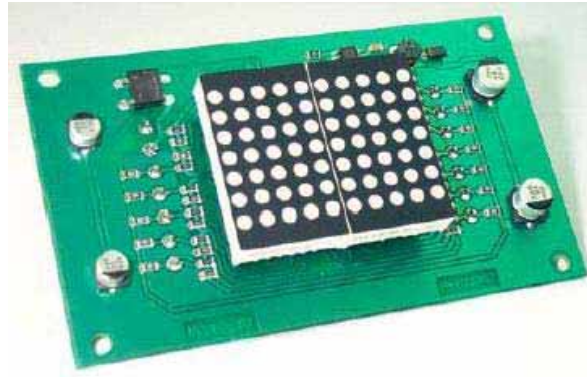
- 18 mm Φ 10 x 7 dot matrix LED display,
- 50 Hz scanning frequency, 1/10 duty factor,
- Several mounting options,
- 12V - 30V DC supply,
- Grey and binary coded inputs,
- Direction arrows input,
- Unlimited font selection, bitmapped fonts,
- EEPROM type memory, no need to preorder,
- Perfect solution to display floor numbers in floor fixtures with different scrolling techniques.



User Adjustable Properties

- Luminance (200 steps),
- Scrolling speed,
- Horizontal / Vertical displaying,
- Fixed or moving direction arrows,
- Moving arrows sliding delay,
- Out of Service input selection,
- Inputs accepted delay time.

DMD230S7 SMPS Dot Matrix Display



Functions

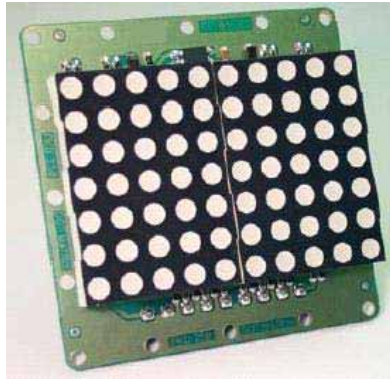
- 30 mm Φ 3 10 x 7 dot matrix LED display,
- 100 Hz, 1/5 driving,
- 7 segment, binary, grey decoding,
- Mappable input design,
- 12V - 35V DC supply, 35 mA peak current,
- 7 + 7 pin pluggable terminal blocks,
- Direction arrows input,
- Bitmapped fonts,
- EEPROM type memory,
- Can decode display driving signals and display dot matrix figures with scrolling effects,
- Perfect replacement for your old 7 segment floor indicators.



User Adjustable Properties

- Luminance (200 steps),
- Scrolling speed,
- Horizontal / Vertical displaying,
- Fixed or moving direction arrows,
- Moving arrows sliding delay,
- Out of service input selection,
- Inputs accepted delay time.
- Ability to give serial number.

DMD250S SMPS Dot Matrix Display



Functions

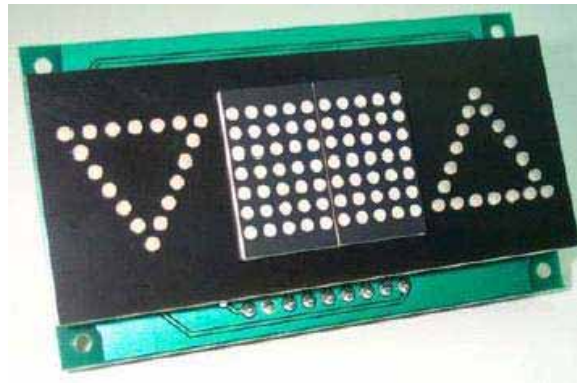
- 50 mm Φ 5 10 x 7 dot matrix LED display,
- 100 Hz scanning frequency, 1/5 duty factor,
- Several mounting options
- 12V - 35V DC supply, 35 mA peak current,
- 9 pin pluggable terminal blocks
- Grey and binary coded inputs
- Direction arrows input,
- Unlimited font selection, bitmapped fonts,
- EEPROM type memory, no need to preorder,
- Perfect solution to display floor numbers with different scrolling techniques,
- Consumes very low power.



User Adjustable Properties

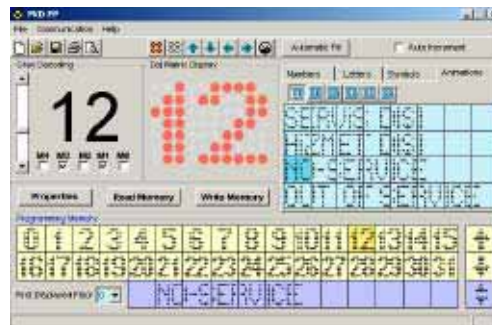
- Luminance (200 steps),
- Scrolling speed,
- Horizontal / Vertical displaying,
- Fixed or moving direction arrows,
- Moving arrows sliding delay,
- Out of service input selection,
- Inputs accepted delay time.
- Ability to give serial number.

DMD230AD Dot Matrix Display



Functions

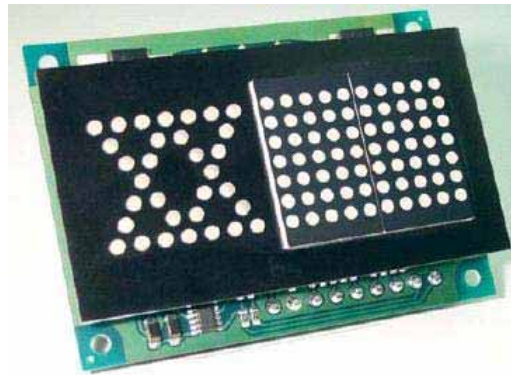
- 30 mm Φ 3 10 x 7 dot matrix LED display,
- 36 pieces Φ 3 LED independent arrows,
- 100 Hz scanning frequency, 1/5 duty factor,
- Several mounting options
- 12V - 30V DC supply,
- 9 pin pluggable terminal blocks
- Grey and binary coded inputs
- Unlimited font selection, bitmapped fonts,
- EEPROM type memory, no need to preorder,
- Perfect solution to display floor numbers with different scrolling techniques,
- Separate direction arrows on board.



User Adjustable Properties

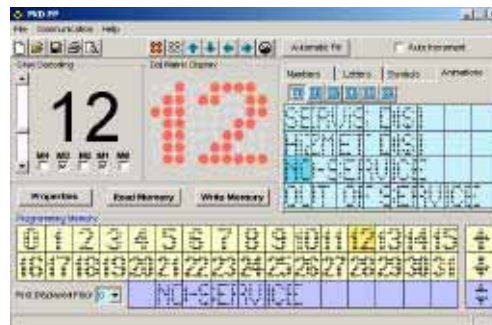
- Luminance (200 steps),
- Scrolling speed,
- Out of service input selection,
- Inputs accepted delay time.
- Ability to give serial number.

DMD230AE Dot Matrix Display



Functions

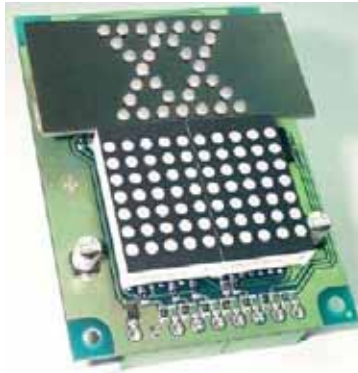
- 30 mm Φ 3 10 x 7 dot matrix LED display,
- 32 pieces Φ 3 LED arrows,
- 100 Hz scanning frequency, 1/5 duty factor,
- Several mounting options
- 12V - 30V DC supply,
- 9 pin pluggable terminal blocks
- Grey and binary coded inputs
- Unlimited font selection, bitmapped fonts,
- EEPROM type memory, no need to preorder,
- Perfect solution to display floor numbers with different scrolling techniques,
- Direction arrows on board.



User Adjustable Properties

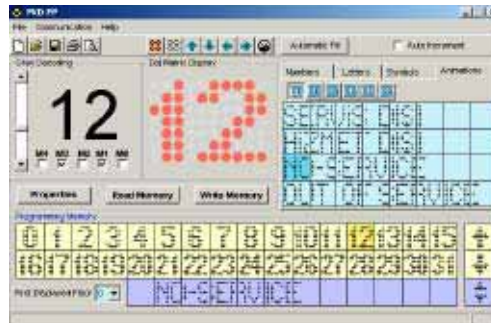
- Luminance (200 steps),
- Scrolling speed,
- Out of service input selection,
- Inputs accepted delay time.
- Ability to give serial number.

DMD230ATE Dot Matrix Display



Functions

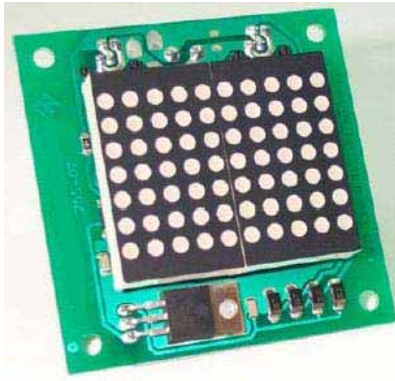
- 30 mm Φ 3 10 x 7 dot matrix LED display,
- 32 pieces Φ 3 LED arrows,
- 100 Hz scanning frequency, 1/5 duty factor,
- Several mounting options
- 12V - 30V DC supply,
- 9 pin pluggable terminal blocks
- Grey and binary coded inputs
- Unlimited font selection, bitmapped fonts,
- EEPROM type memory, no need to preorder,
- Perfect solution to display floor numbers with different scrolling techniques,
- Direction arrows on board.



User Adjustable Properties

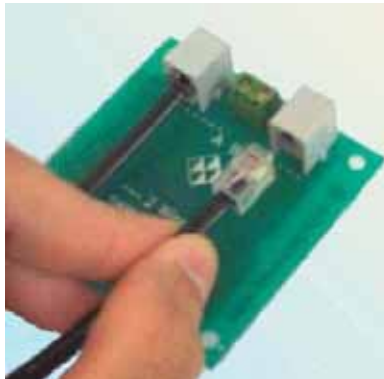
- Luminance (200 steps),
- Scrolling speed,
- Out of service input selection,
- Inputs accepted delay time,
- Ability to give serial number.

DMD230 Two Wire Dot Matrix Display

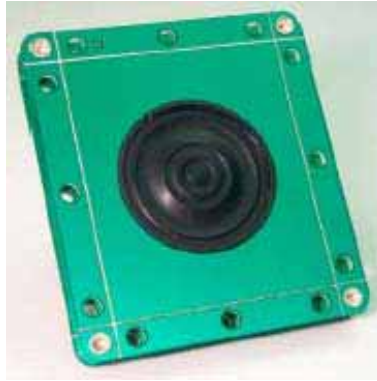


Functions

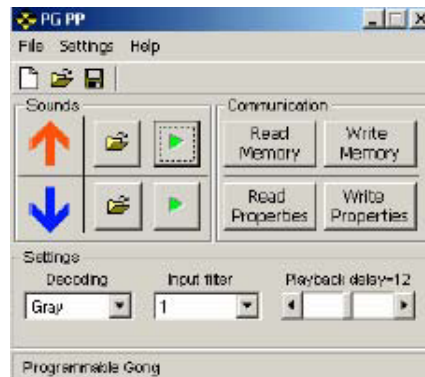
- 30 mm Φ 3 10 x 7 dot matrix display,
- 100 Hz scanning frequency,
- 1/5 duty factor,
- Symmetrical mounting,
- 2 x RJ11 plug and 2 terminal,
- SMT manufacturing,
- Ready to mount dot matrix floor indicator.

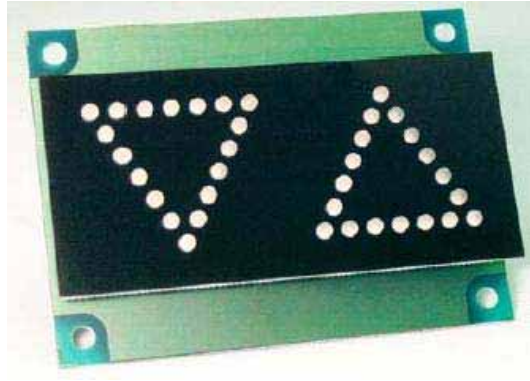


- No trouble in mounting,
- No need to connect so many wires on the module,
- Just plug the cable and forget.

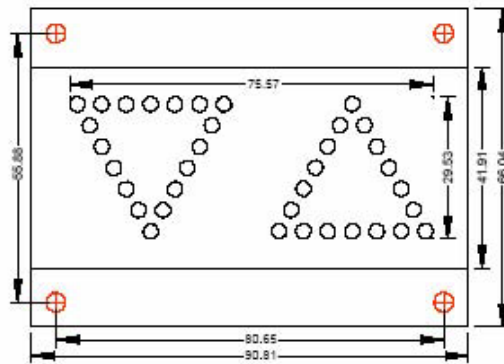
AG200 Programmable Gong**Functions**

- You can playback Windows WAV files,
- 11 KHz 8bit playback rate,
- 256 Kb memory,
- Pluggable terminal blocks,
- Built-in MYLAR speaker (optional),
- Volume control,
- External speaker output,
- Binary and grey type inputs are acceptable,
- Waits until car arrival and playbacks what is uploaded.

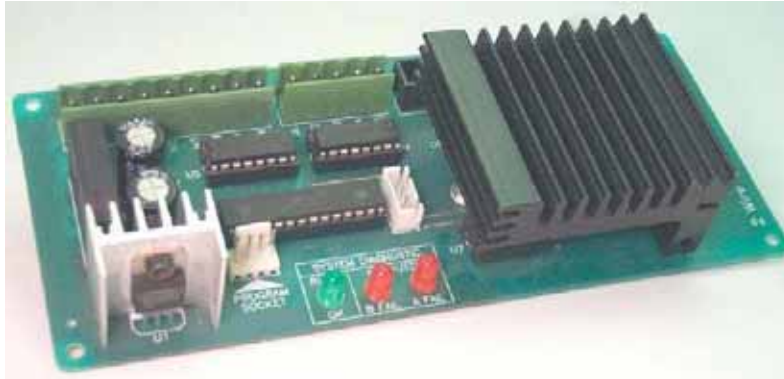


YO182 LED Direction Arrows**Functions**

- 36 $\Phi 3$ LED,
- SMT manufacturing,
- 3 input terminal,
- High brightness,
- Designed for over door applications with 3 mm LEDs.



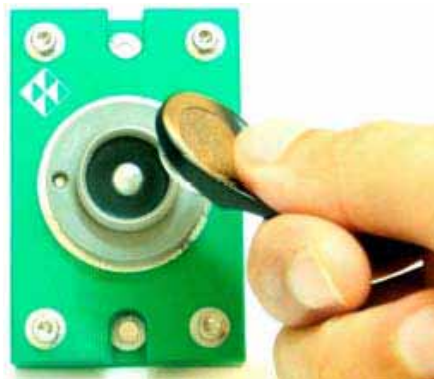
SU16 Two Wire Serial Master



Functions

- 2 independent, short circuit protected outputs,
- Can operate up to 160 m and over 20 nodes with SKD230 modules,
- Programmable via PC software, fully customisable bitmapped fonts on dot matrix indicators,
- Binary, grey and 7 segment inputs are acceptable,
- Positive or negative signal common is acceptable,
- Out of service, overload, busy, fan, door open inputs can be acceptable,
- 73 mm Phoenix or Klemsan pcb holder rails compatible,
- Pluggable terminal blocks, 16PIN X401 new lift control panel compatible socket.
- Converts binary grey or 7 segment parallel inputs to only 2 wire (including data and power),
- Unique transmission protocol keeps the data stable even over long lines,
- Fully customisable by the user with a PC software.

ACCESS32C 32 Key iButton® Access Control System



Functions

- Restricts elevator usage with simple electronic keys,
- 32 key memory, expandable up to 512 keys (optional),
- Very easy mounting,
- 24V DC supply, 12V DC as an option,
- Temporarily system disable option,
- No need to use security password systems,
- An electronic lock system which lets you to control elevator usage with iButton fobs.

PS200GF Emergency State Power Supplier



Functions

- 12V Battery charger and emergency power supply,
- Fan control with programmable on-timer,
- Programmable up & down gong,
- Emergency lightening output,
- Powerful siren output,
- DIN Rail mounting kit (optional),
- Integrated module which controls emergency state power supplier with battery charger, air ventilating fan control with timer, programmable door chimes and powerful siren.

